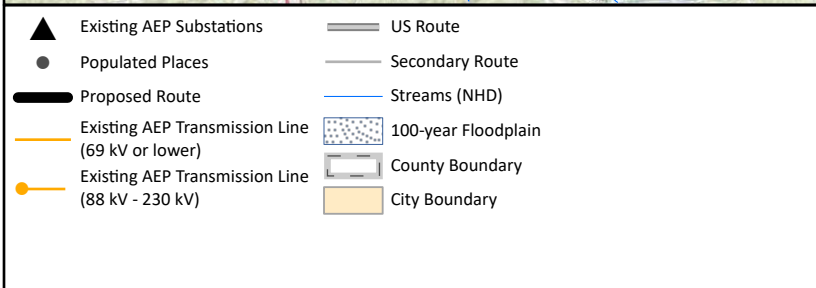
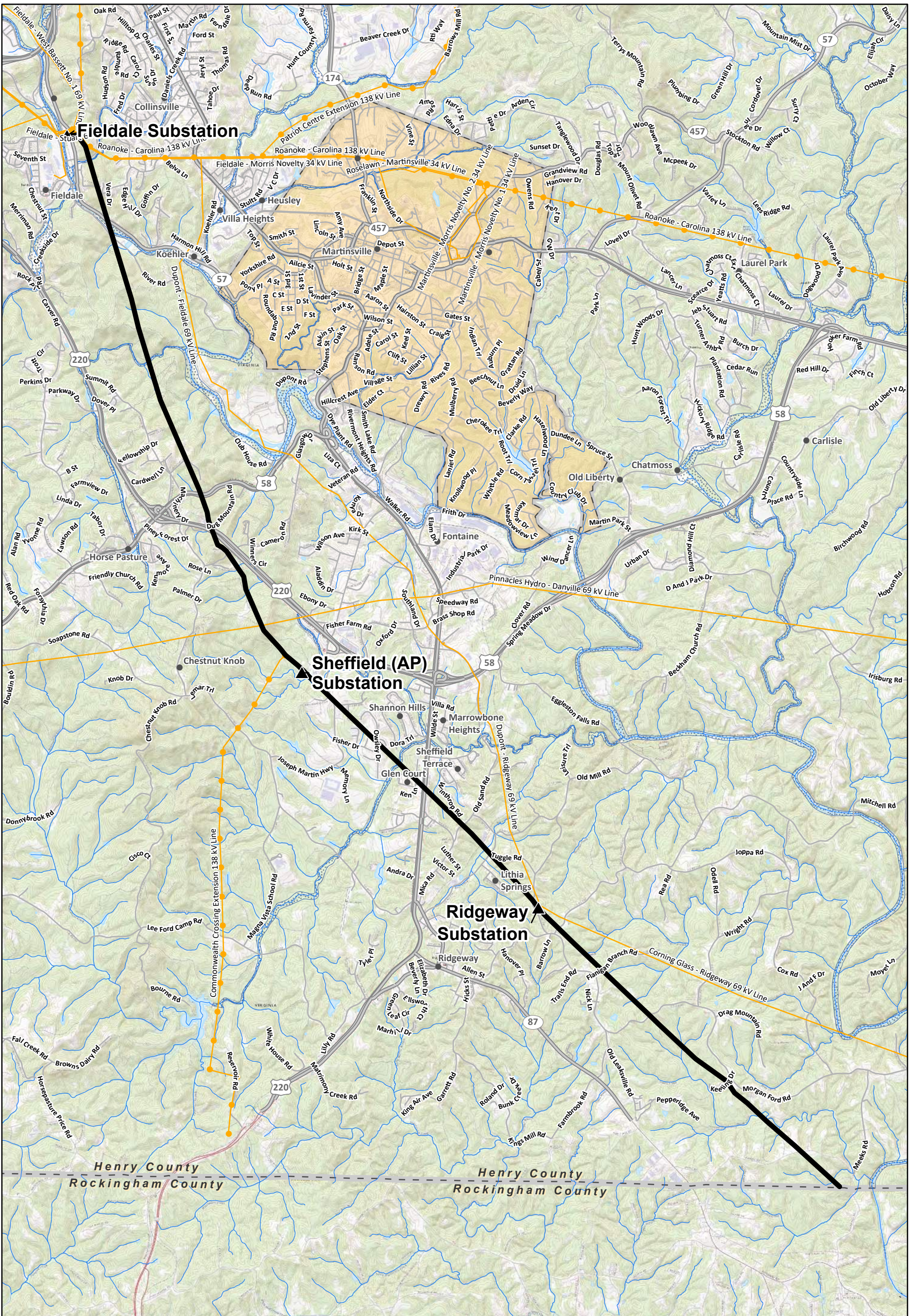


## APPENDIX A PROJECT FIGURES

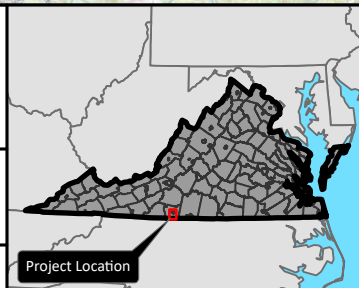


Henry County, Virginia

Author: DV  
Project: 159105

NAD 1983 State Plane Virginia South  
FIPS 4502 Feet  
Lambert Conformal Conic  
North American 1983

October 05, 2021

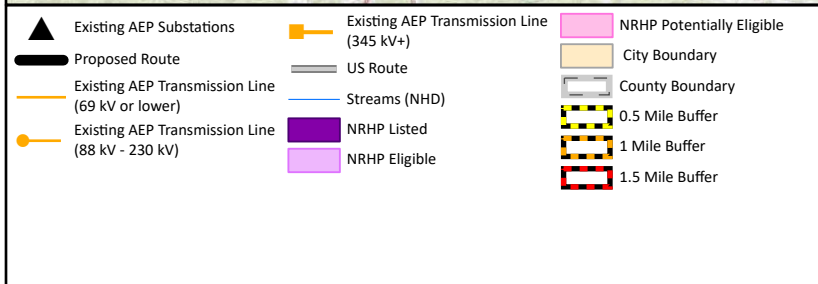
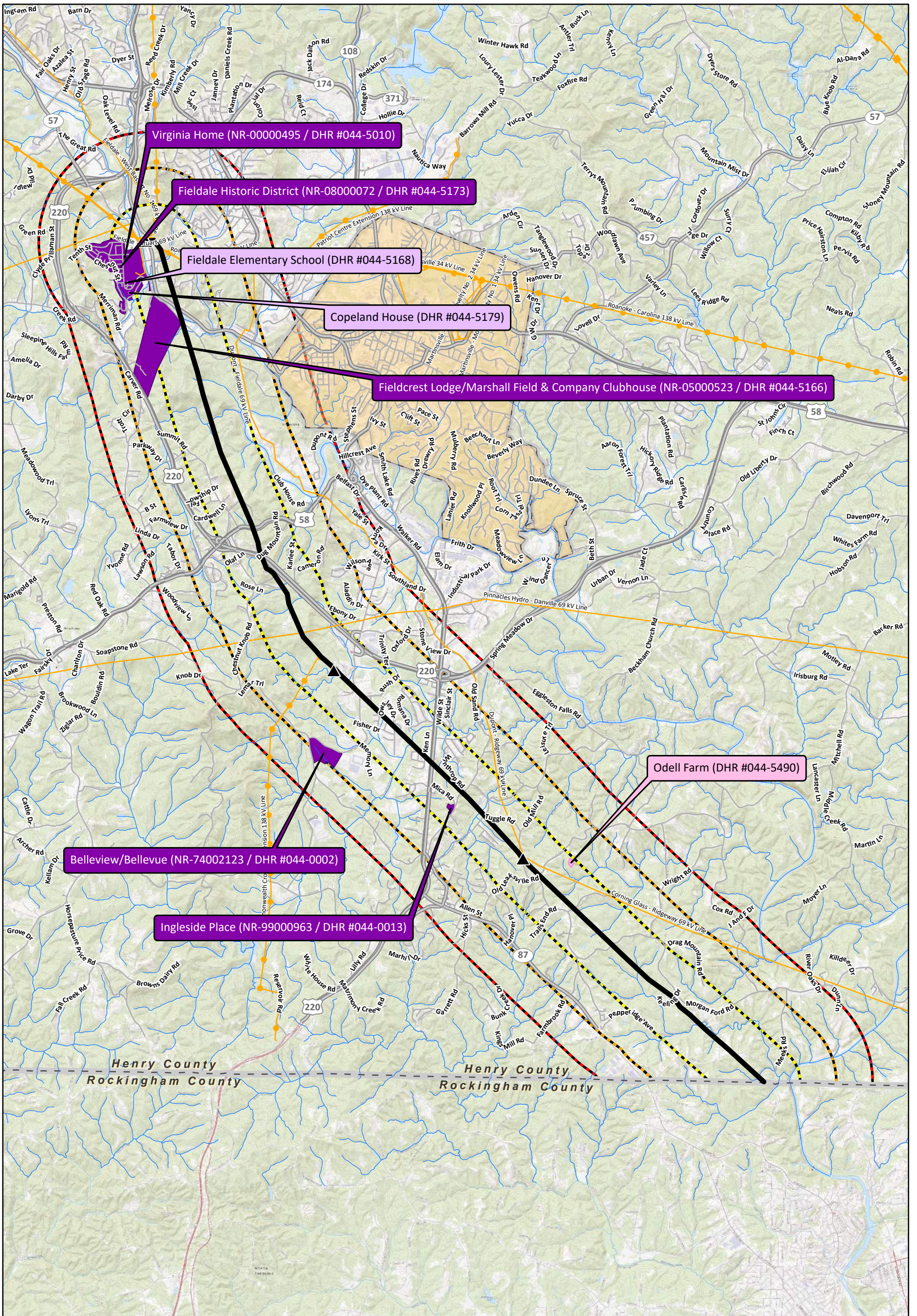


**Figure 1:**  
**DHR Pre-Application Review**

**AMERICAN ELECTRIC POWER**  
SOUNDNESS THROUGH

**Fieldale to Ridgeway  
138 kV Rebuild Project**

0 1 2  
Miles

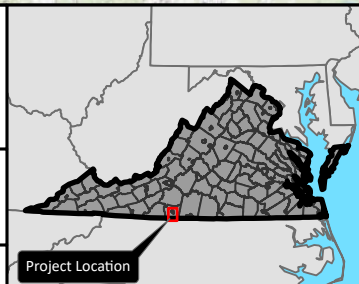


City of Martinsville and Henry County, Virginia

Author: DV  
Project: 159105

NAD 1983 State Plane Virginia South  
FIPS 4502 Feet  
Lambert Conformal Conic  
North American 1983

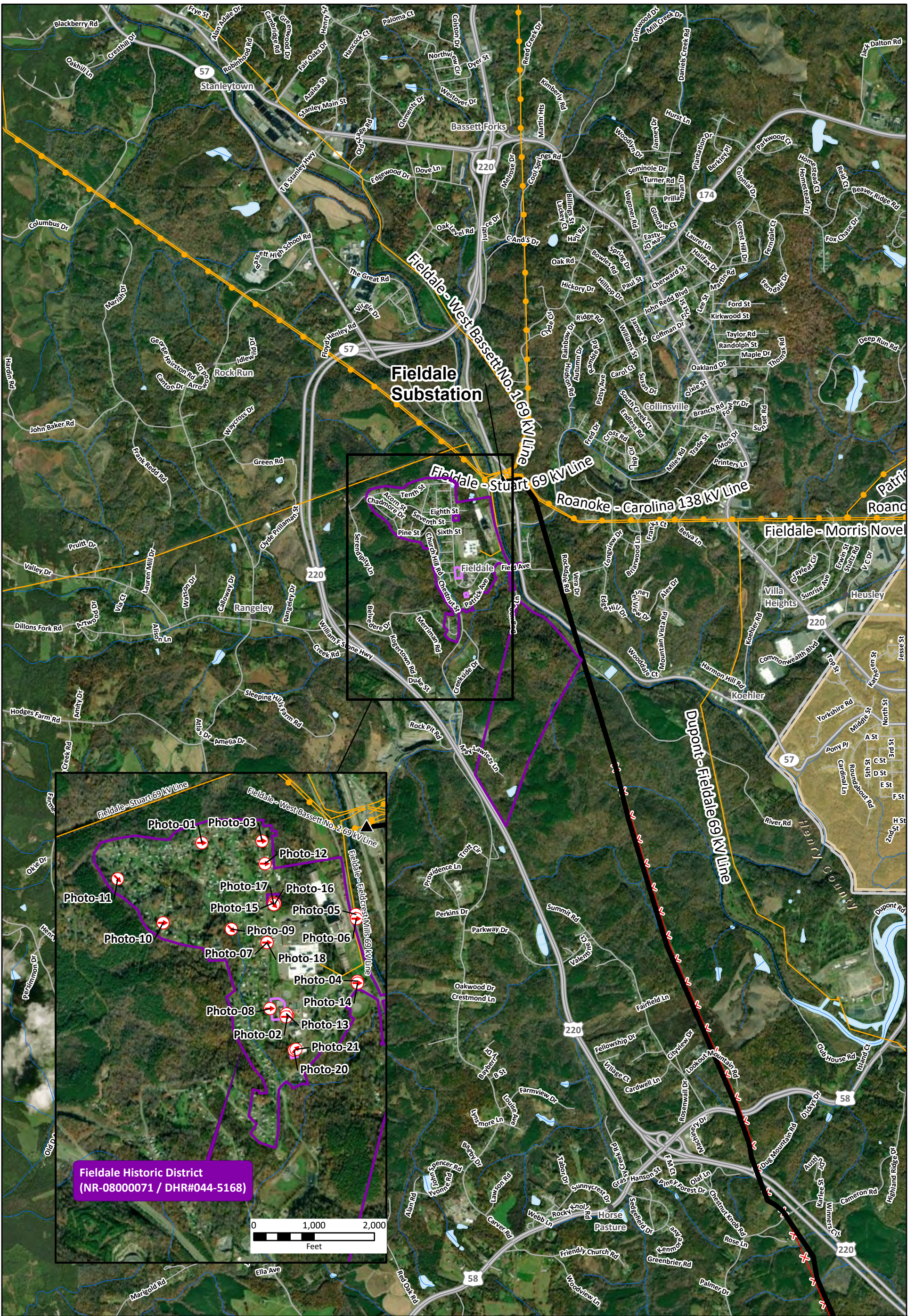
October 29, 2021



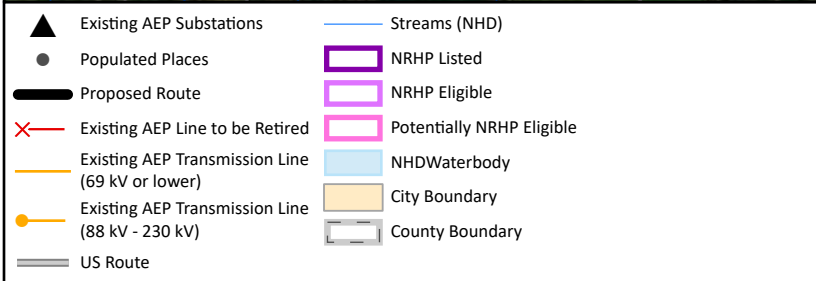
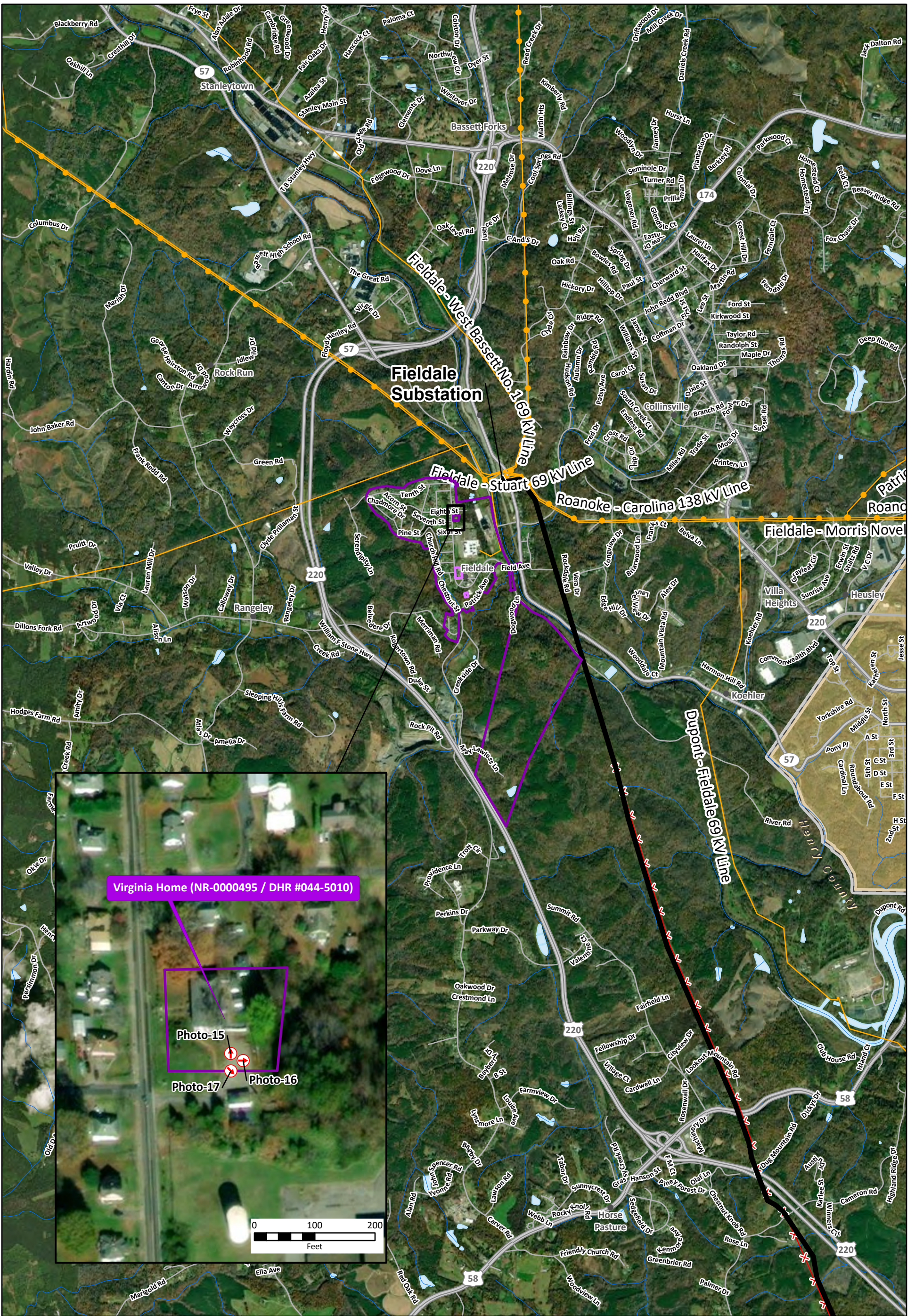
**Figure 2:  
Previously Identified  
Resources**

**Fieldale to Ridgeway  
138 kV Rebuild Project**

0 1 2  
Miles



<ul style="list-style-type: none"> <li>▲ Existing AEP Substations</li> <li>● Populated Places</li> <li>— Proposed Route</li> <li>✕ Existing AEP Line to be Retired</li> <li>— Existing AEP Transmission Line (69 kV or lower)</li> <li>— Existing AEP Transmission Line (88 kV - 230 kV)</li> <li>— US Route</li> </ul>	<ul style="list-style-type: none"> <li>— Streams (NHD)</li> <li>▭ NRHP Listed</li> <li>▭ NRHP Eligible</li> <li>▭ Potentially NRHP Eligible</li> <li>— NHD Waterbody</li> <li>▭ City Boundary</li> <li>▭ County Boundary</li> </ul>	<p>City of Martinsville and Henry County, Virginia</p> <p>Author: DV Project: 159105</p> <p>NAD 1983 State Plane Virginia South FIPS 4502 Feet Lambert Conformal Conic North American 1983</p> <p>October 28, 2021</p>	<p><b>Figure 3:</b> <b>Resource Location</b> <b>Map Series Page 1 of 8</b></p> <p><b>Fieldale to Ridgeway</b> <b>138 kV Rebuild Project</b></p> <p>AMERICAN ELECTRIC POWER</p> <p>0 2,000 4,000 Feet</p>
---	---	--	--

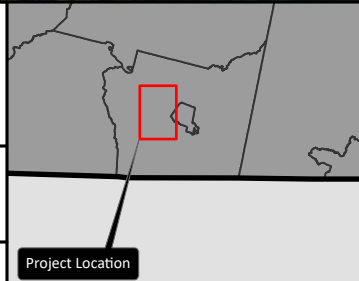


City of Martinsville and Henry County, Virginia

Author: DV  
Project: 159105

NAD 1983 State Plane Virginia South  
FIPS 4502 Feet  
Lambert Conformal Conic  
North American 1983

October 28, 2021



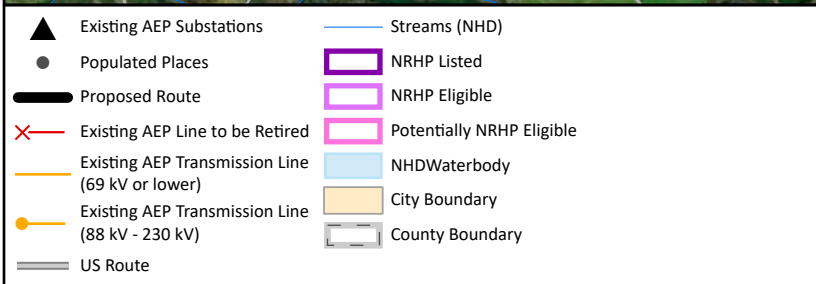
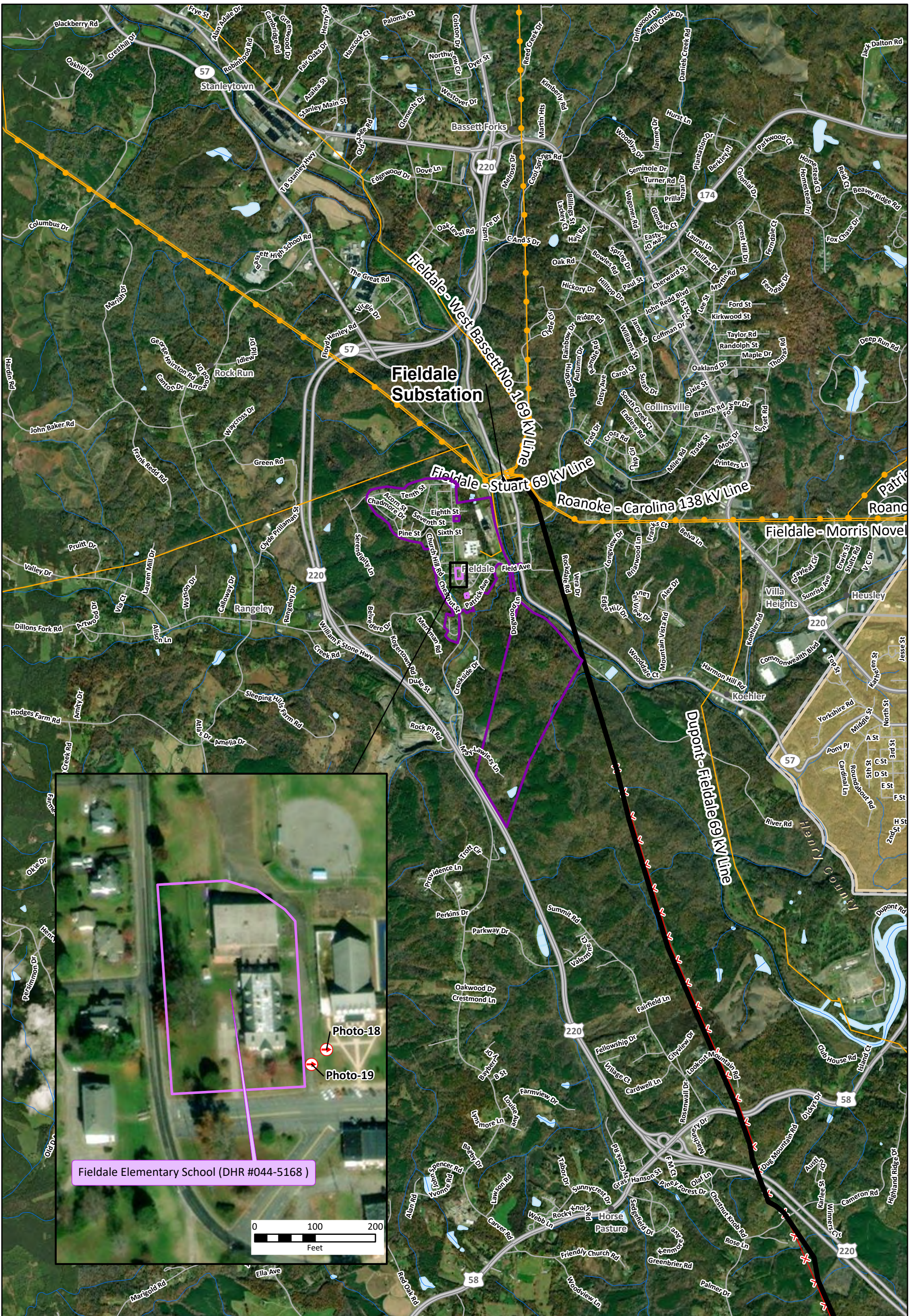
**Figure 3:**  
**Resource Location**  
**Map Series Page 2 of 8**

**AMERICAN ELECTRIC POWER**

Fieldale to Ridgeway  
138 kV Rebuild Project

0 2,000 4,000  
Feet

- ▲ Existing AEP Substations
- Populated Places
- Proposed Route
- ✗ Existing AEP Line to be Retired
- Existing AEP Transmission Line (69 kV or lower)
- Existing AEP Transmission Line (88 kV - 230 kV)
- US Route
- Streams (NHD)
- ▭ NRHP Listed
- ▭ NRHP Eligible
- ▭ Potentially NRHP Eligible
- ▭ NHD Waterbody
- ▭ City Boundary
- ▭ County Boundary



City of Martinsville and Henry County, Virginia

Author: DV  
Project: 159105

NAD 1983 State Plane Virginia South  
FIPS 4502 Feet  
Lambert Conformal Conic  
North American 1983

October 28, 2021



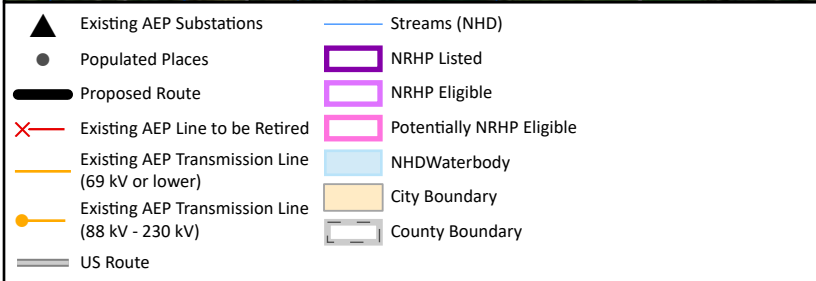
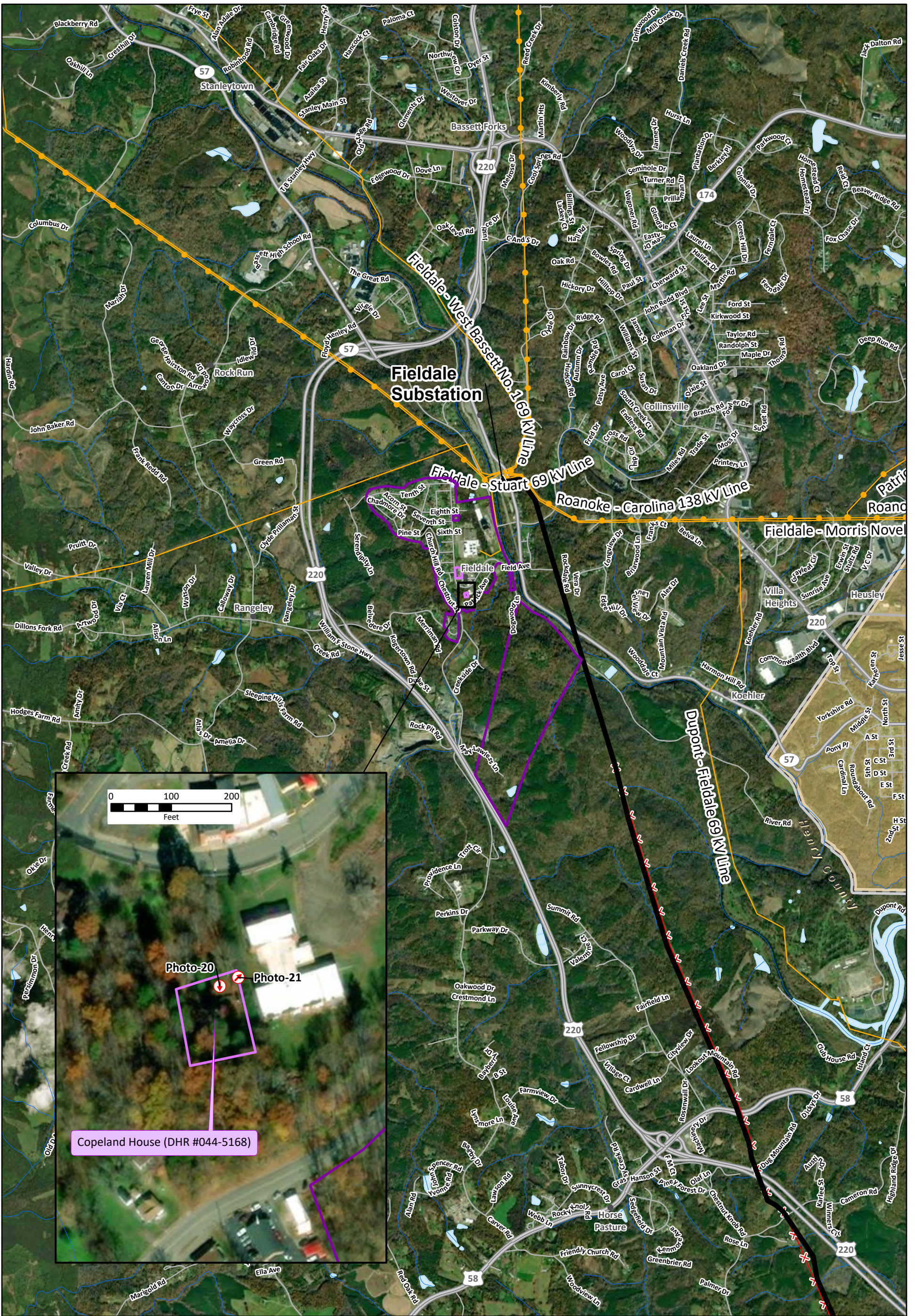
**Figure 3:**  
**Resource Location**  
**Map Series Page 3 of 8**

**AMERICAN ELECTRIC POWER**

Fieldale to Ridgeway  
138 kV Rebuild Project

0 2,000 4,000  
Feet

- ▲ Existing AEP Substations
- Populated Places
- Proposed Route
- ✕ Existing AEP Line to be Retired
- Existing AEP Transmission Line (69 kV or lower)
- Existing AEP Transmission Line (88 kV - 230 kV)
- US Route
- Streams (NHD)
- ▭ NRHP Listed
- ▭ NRHP Eligible
- ▭ Potentially NRHP Eligible
- ▭ NHD Waterbody
- ▭ City Boundary
- ▭ County Boundary

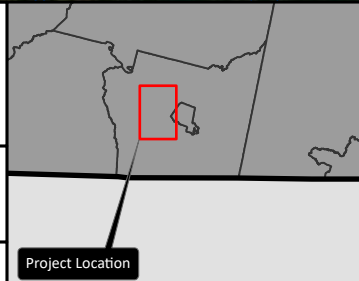


City of Martinsville and Henry County, Virginia

Author: DV  
Project: 159105

NAD 1983 State Plane Virginia South  
FIPS 4502 Feet  
Lambert Conformal Conic  
North American 1983

October 28, 2021

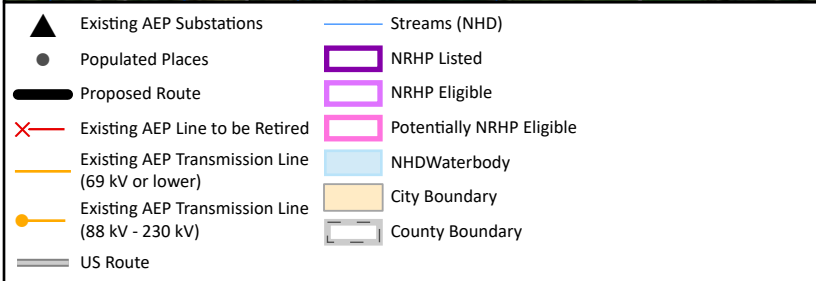
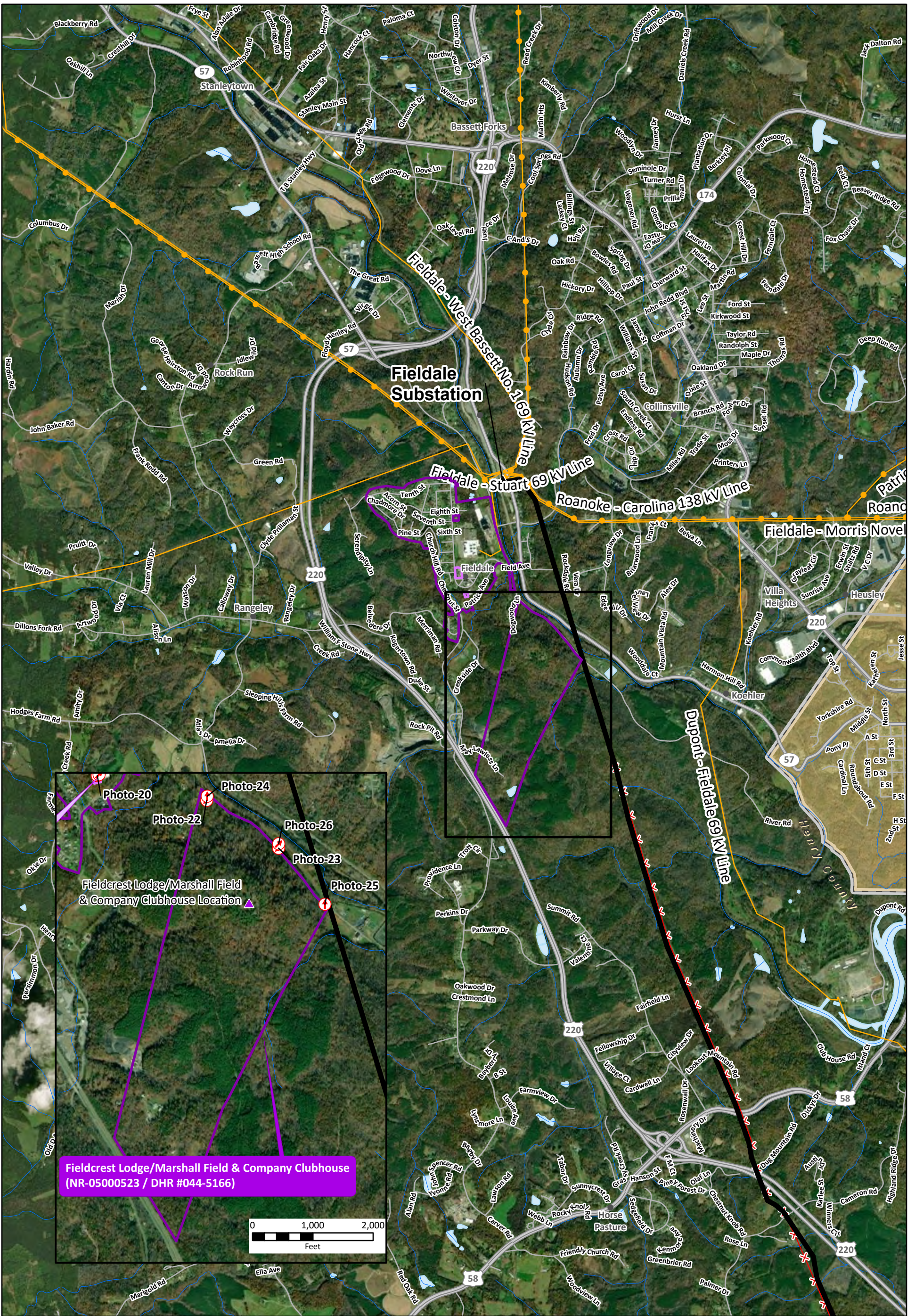


**Figure 3:**  
**Resource Location**  
**Map Series Page 4 of 8**

**Fieldale to Ridgeway**  
**138 kV Rebuild Project**

0 2,000 4,000  
Feet

- ▲ Existing AEP Substations
- Populated Places
- Proposed Route
- ✕ Existing AEP Line to be Retired
- Existing AEP Transmission Line (69 kV or lower)
- Existing AEP Transmission Line (88 kV - 230 kV)
- US Route
- Streams (NHD)
- ▭ NRHP Listed
- ▭ NRHP Eligible
- ▭ Potentially NRHP Eligible
- ▭ NHD Waterbody
- ▭ City Boundary
- ▭ County Boundary

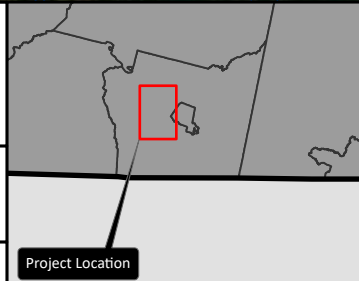


City of Martinsville and Henry County, Virginia

Author: DV  
Project: 159105

NAD 1983 State Plane Virginia South  
FIPS 4502 Feet  
Lambert Conformal Conic  
North American 1983

October 28, 2021



**Figure 3:**  
**Resource Location**  
**Map Series Page 5 of 8**

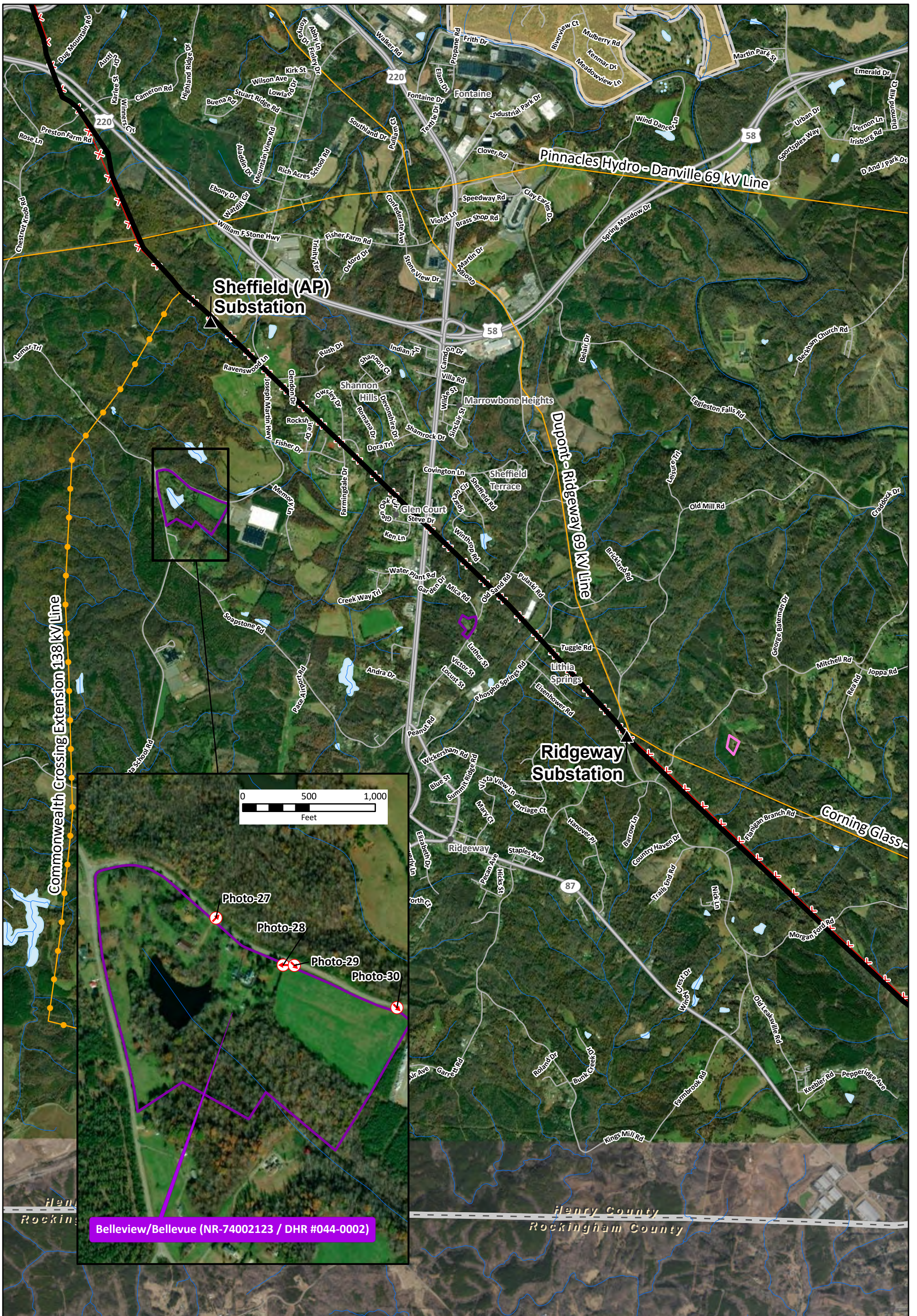
**AMERICAN ELECTRIC POWER**

Fieldale to Ridgeway  
138 kV Rebuild Project

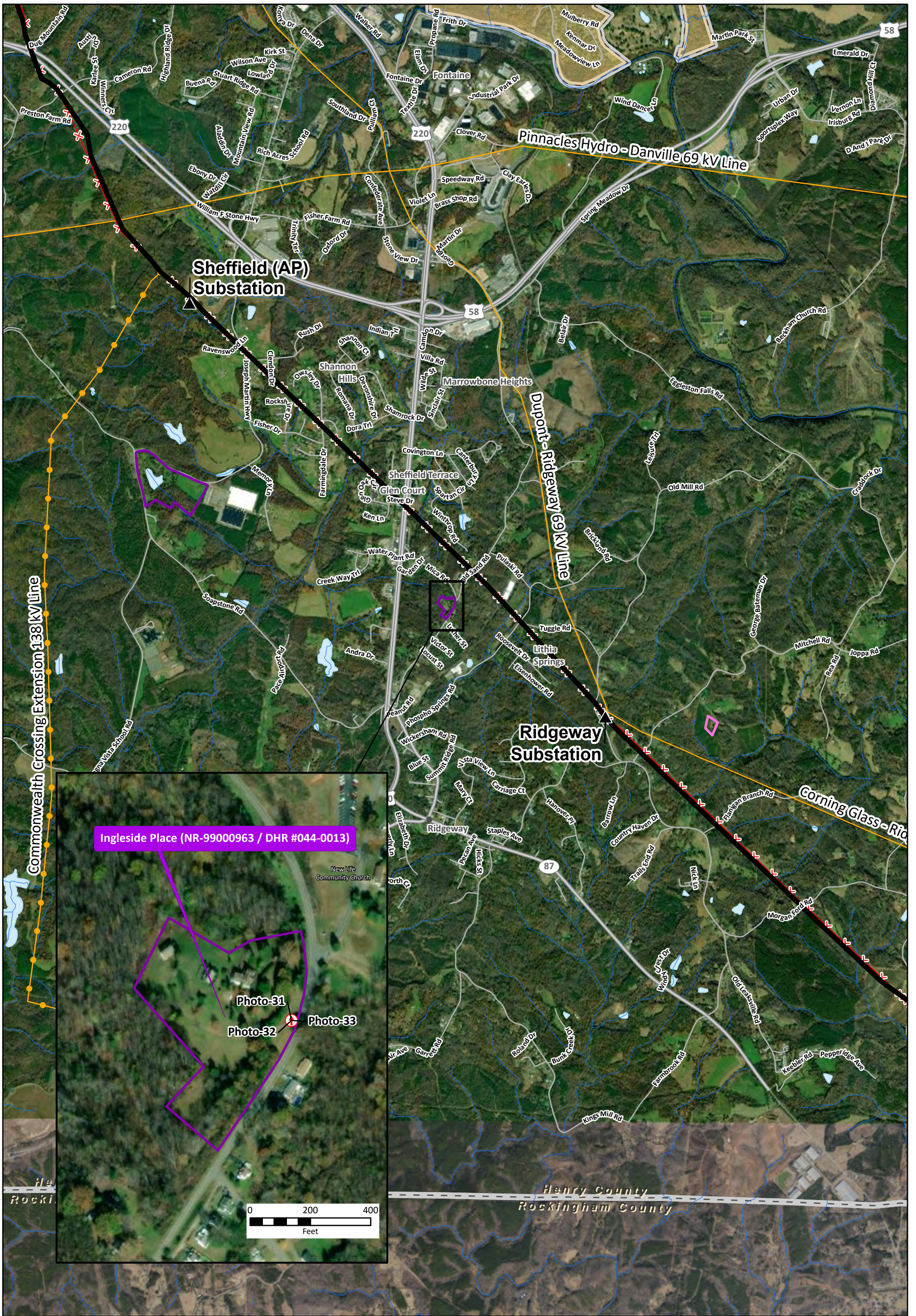
0 2,000 4,000  
Feet

- ▲ Existing AEP Substations
- Populated Places
- Proposed Route
- ✕ Existing AEP Line to be Retired
- Existing AEP Transmission Line (69 kV or lower)
- Existing AEP Transmission Line (88 kV - 230 kV)
- US Route
- Streams (NHD)
- ▭ NRHP Listed
- ▭ NRHP Eligible
- ▭ Potentially NRHP Eligible
- ▭ NHD Waterbody
- ▭ City Boundary
- ▭ County Boundary





<ul style="list-style-type: none"> <li>▲ Existing AEP Substations</li> <li>● Populated Places</li> <li>— Proposed Route</li> <li>✕ Existing AEP Line to be Retired</li> <li>— Existing AEP Transmission Line (69 kV or lower)</li> <li>— Existing AEP Transmission Line (88 kV - 230 kV)</li> <li>— US Route</li> </ul>	<ul style="list-style-type: none"> <li>— Streams (NHD)</li> <li>▭ NRHP Listed</li> <li>▭ NRHP Eligible</li> <li>▭ Potentially NRHP Eligible</li> <li>— NHD Waterbody</li> <li>— City Boundary</li> <li>— County Boundary</li> </ul>	<p>City of Martinsville and Henry County, Virginia</p> <p>Author: DV Project: 159105</p> <p>NAD 1983 State Plane Virginia South FIPS 4502 Feet Lambert Conformal Conic North American 1983</p> <p>October 28, 2021</p>	<p><b>Figure 3:</b> <b>Resource Location</b> <b>Map Series Page 6 of 8</b></p> <p><b>AMERICAN ELECTRIC POWER</b></p> <p>Fieldale to Ridgeway 138 kV Rebuild Project</p> <p>0 2,000 4,000 Feet</p>
---	---	--	---

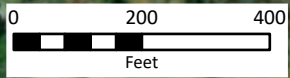


Ingleside Place (NR-99000963 / DHR #044-0013)

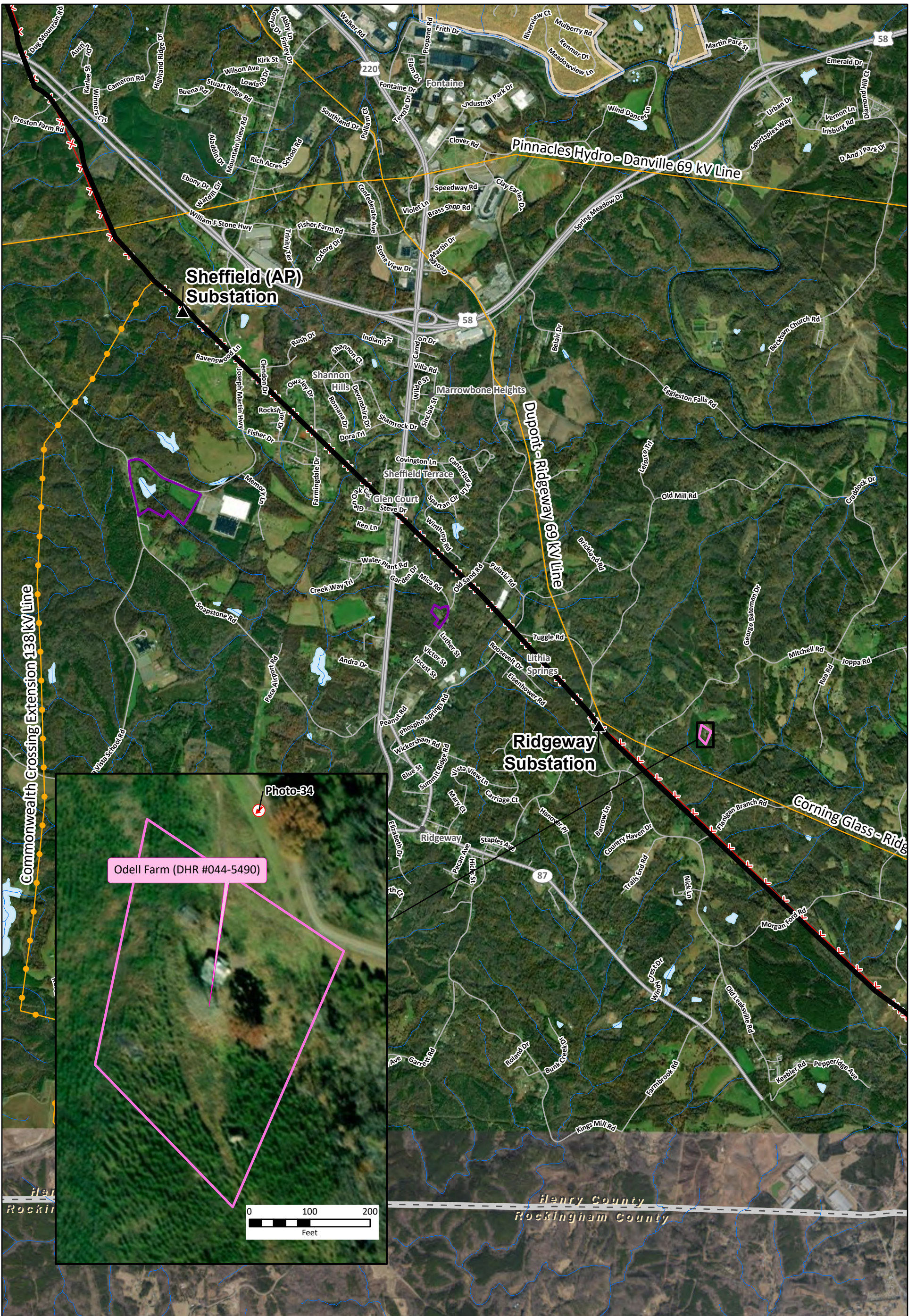
Photo-31

Photo-32

Photo-33



<ul style="list-style-type: none"> <li>▲ Existing AEP Substations</li> <li>● Populated Places</li> <li>— Proposed Route</li> <li>✕ Existing AEP Line to be Retired</li> <li>— Existing AEP Transmission Line (69 kV or lower)</li> <li>— Existing AEP Transmission Line (88 kV - 230 kV)</li> <li>— US Route</li> </ul>	<ul style="list-style-type: none"> <li>— Streams (NHD)</li> <li>▭ NRHP Listed</li> <li>▭ NRHP Eligible</li> <li>▭ Potentially NRHP Eligible</li> <li>— NHD Waterbody</li> <li>— City Boundary</li> <li>— County Boundary</li> </ul>	<p>City of Martinsville and Henry County, Virginia</p> <p>Author: DV Project: 159105</p> <p>NAD 1983 State Plane Virginia South FIPS 4502 Feet Lambert Conformal Conic North American 1983</p> <p>October 28, 2021</p>	<p><b>Figure 3:</b> <b>Resource Location</b> <b>Map Series Page 7 of 8</b></p> <p><b>AMERICAN ELECTRIC POWER</b></p> <p>Fieldale to Ridgeway 138 kV Rebuild Project</p> <p>0 2,000 4,000 Feet</p>
---	---	--	---



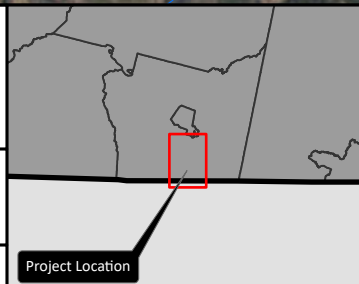
- ▲ Existing AEP Substations
- Populated Places
- Proposed Route
- ✕ Existing AEP Line to be Retired
- Existing AEP Transmission Line (69 kV or lower)
- Existing AEP Transmission Line (88 kV - 230 kV)
- US Route
- Streams (NHD)
- ▭ NRHP Listed
- ▭ NRHP Eligible
- ▭ Potentially NRHP Eligible
- ▭ NHD Waterbody
- ▭ City Boundary
- ▭ County Boundary

City of Martinsville and Henry County, Virginia

Author: DV  
Project: 159105

NAD 1983 State Plane Virginia South  
FIPS 4502 Feet  
Lambert Conformal Conic  
North American 1983

October 29, 2021



**Figure 3:**  
**Resource Location**  
**Map Series Page 8 of 8**

**AMERICAN ELECTRIC POWER**

Fieldale to Ridgeway  
138 kV Rebuild Project

0 2,000 4,000  
Feet